

TWIN

RG E



Office of the Monroe County Surveyor
Trohn Enright-Randolph

Health Services Building
119 West 7th Street
Bloomington, IN 47404
Phone: (812) 349-2570

Dear User,

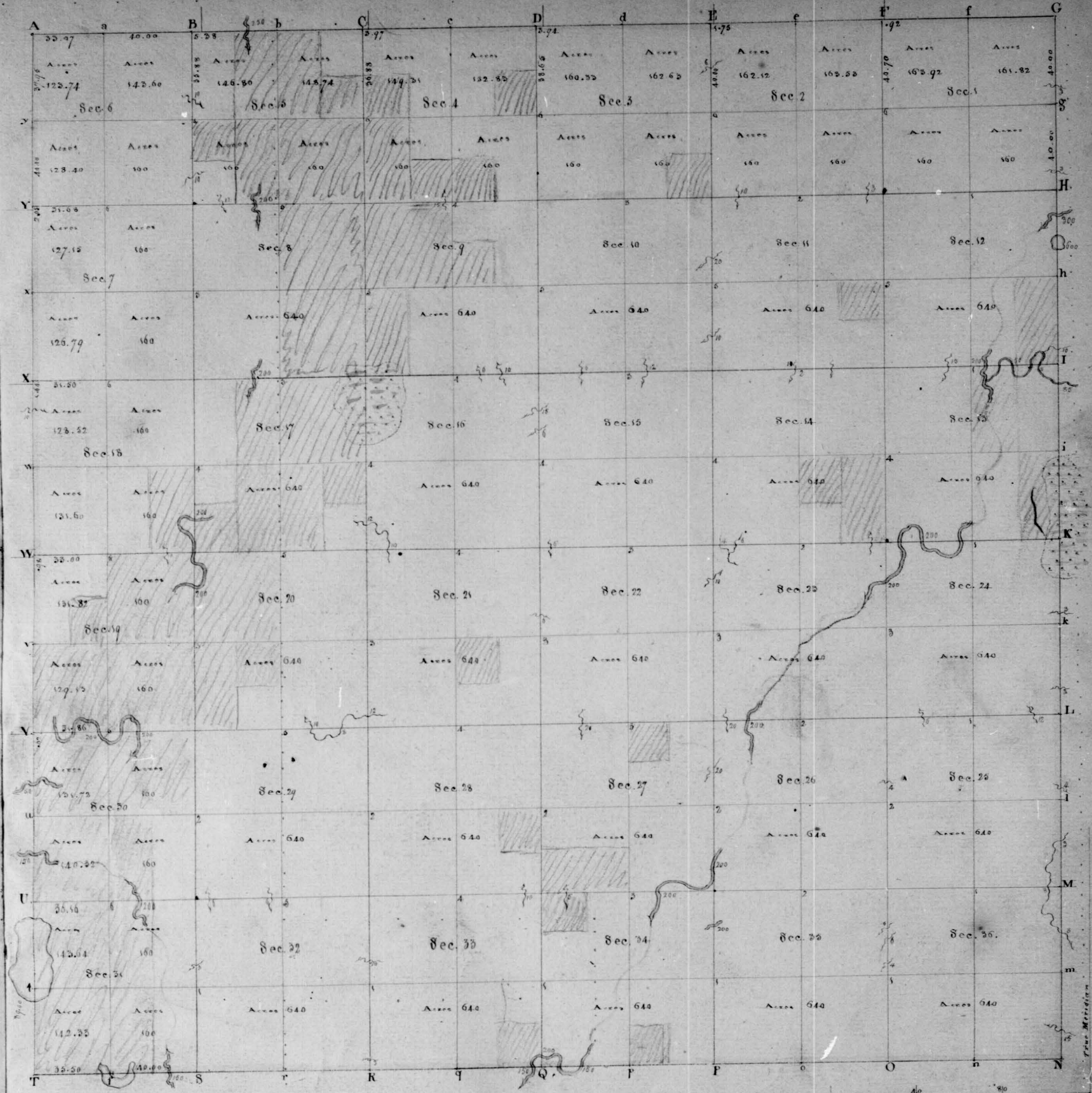
The following images were obtained in 2017 by the Office of the Monroe County Surveyor from the State Imaging and Microfilm Laboratory at the Indiana State Archives. The field notes and plats for Jackson County are stored on microfilm Reel 7545 at the Indiana State Archives. Each page provided by the State Imaging and Microfilm Laboratory is approximately 18MB. Our office combined the pages by Township & Range and reduced the resulting pdfs. This process may have caused some degradation in quality. We will provide unreduced images of specific pages if required. Please contact us at 812-349-2570 or at SurveyorsOffice@co.monroe.in.us to request a higher quality image of any specific page.

The pdfs are bookmarked with the original page numbers as assigned by the State Imaging and Microfilm Laboratory.

Be prepared to provide the county name, reel number, and the required page numbers when requesting full sized images.

If you would like a DVD of an entire county, please provide us with one DVD per county along with a self-addressed, stamped envelope.

Trohn Enright-Randolph
Monroe County Surveyor



Township N° IV North, Range N° VI East.

Surveyed by Jacob Fowler 1807.

Description of the quality of the land on the interior sectional lines.

Between Sections	quality &c	Between Sections	quality &c	Between Sections	quality &c
35. 36	Level; Buck, Poplar, Gum, Oak &c	10. 11	Level; Buck, Poplar, Gum, Oak &c	29. 30	Upland and bottom; Buck, Poplar &c
25. 26	Similar	4. 9	Similar	21. 22	Similar
34. 35	Similar	1. 12	Similar	18. 19	Little rising; Buck, Poplar &c
26. 27	Similar	33. 34	Bottom, past wet; Buck, Poplar, Gum, Oak &c	17. 20	Similar
25. 26	Similar	27. 28	Similar	10. 15	Similar
26. 27	Similar	27. 28	Similar	28. 29	Buck, Oak & Poplar
24. 25	Similar	32. 33	Similar	7. 18	Similar
22. 27	Similar	28. 33	Similar	9. 18	Similar
22. 23	Similar	31. 32	Similar	6. 7	Similar
24. 25	Similar	29. 32	Similar	6. 8	Similar
23. 24	Similar	30. 31	Similar	3. 10	Similar
22. 27	Similar	19. 30	Similar	16. 18	Low ridge, good; Buck, Poplar, Gum &c
21. 22	Similar	19. 20	Similar	9. 10	Similar
20. 21	Similar	13. 14	Similar	7. 8	Similar
18. 21	Similar	16. 17	Similar	6. 6	Similar
15. 22	Similar	17. 18	Similar	2. 3	Similar
14. 23	Similar	5. 17	Similar	8. 11	Similar
13. 14	Similar	11. 12	Similar	2. 11	Upland; Buck, Poplar & Oak
11. 15	Similar	8. 9	Similar	12. 13	Buck, Oak &c, past bottom
11. 14	Similar	1. 2	Similar	1. 6	Low bottom; Gum, Maple, Ash &c

North 5th Mile Town 3 N. R. 687 E

34.00 Elm 18 Inchs diam. } Maple Swamp the whole way

40.00 Set Post from which a Maple 12 Inchs diam. bears N 70 W 12 lks to Maple 6 Inchs diam. bears S 81 E 30 lks -

55.40 Maple 12 Inchs diam. } Maple Swamp.

80.00 Set Post corner to Sect: 1112 Town 3 N. R. 6 E from which a White Oak 36 Inchs diam. bears S 10 E 4 lks -
to Gum 12 Inchs diam. bears N 10 W 4 lks -

North 6th Mile Town 3 N. R. 687 E -

16.00 To a large branch of White River - the wide running N. W. } Maple Swamp

40.00 Set Quarter Sec. Post from which an Elm 12 Inchs diam. bears N 76 W 12 lks - W. Oak 12 Inchs diam. bears N 84 E 20 lks -

50.00 quit the swamp

59.00 Brook 3 lks wide course W. } A beautiful flat of Beech

60.00 W. Oak 16 Inchs diam. } Sugar tree land

80.00 Set a Post for the corner of Town: 304 in Range N 687 from which a Beech 8 Inchs diam bears N 42 W 11 lks -
to Beech 12 Inchs diam. bears S 3 W 39 lks -

North Between Townships 484 in Range 687
E. Boundary of S. 4 N. R. 6 E.

10.00 Brook 15 lks wide course W. } Good level land

13.00 Gum 30 Inchs diam. } Timber Sugar &c

40.00 Set Quarter Sec. Post from which a Beech 20 Inchs diam. bears N 57 W 25 lks. W. Oak 6 Inchs diam. bears S 40 E 12 lks -

62.00 Brook 3 lks wide course S. E. } low flat land; rich

76.00 W. Oak 40 Inchs diam. } Timber Beech, Elm &c

80.00 Set post corner to Sect: 2536 T 4 N. R. 6 E from which a Gum 24 Inchs diam. bears N 70 E 26 lks -
to Beech 24 Inchs diam. bears S 73 W 32 lks -

North 2nd Mile Town 4 N. R. 687 E

20.00 Brook 3 lks wide course S. W. } Level rich land. Timber.

37.25 W. Oak 12 Inchs diam. } Beech, Ash, Oak &c

40.00 Set Quarter Sec. Post from which a Gum 24 Inchs diam. bears S 82 W 25 lks. Beech 18 Inchs diam. bears N 49 E 37 lks -

51.00 Brook 4 lks wide course W. } Level rich land. Timber

79.20 Poplar 35 Inchs diam. } Beech, Poplar, Ash &c

80.00 Gum 36 Inchs diam. corner to Sect: 24725 T 4 N. R. 6 E from which a Hickory 15 Inchs diam. bears S 45 E 20 lks -
to Beech 16 Inchs diam. bears N 18 E 48 lks -

North 3rd Mile Town 4 N. R. 687 E

15.00 Brook 3 lks wide course W. } Level Beech land

28.00 Beech 14 Inchs diam. }

40.00 Set Quarter Sec. Post from which a Beech 12 Inchs diam bears N 22 W 17 lks. ditto 12 Inchs diam. bears S 80 E 27 lks -

45.00 Brook 3 lks wide course W. } Port Beech &

60.00 W. Oak 36 Inchs diam.

61.60 entered Swamp } Part Swamp land

80.00 Set Post in Swamp corner to 13124 from which a Gum 8 Inchs diam. bears S 64 E 19 lks. Maple 10 Inchs diam. bears S 66 W 2 lks -

North 4th Mile Town 4 N. R. 687 E.

39.00 Poplar 36 Inchs diam. } Maple Swamp

40.00 Set Quarter Sec. Post from which a Beech 12 Inchs diam. bears N 22 W 17 lks. to Elm 14 Inchs diam. bears S 63 E 11 lks -

76.00 Brook 100 lks running N. W. } This line passes over pretty good bottom. but to pieces with huts.

80.00 Set Post corner to Sect: 12112 from which a Beech 12 Inchs diam. bears N 78 W 23 lks - Augt 22nd 1886.

North 5th Mile Town 4 N. R. 687 E -

11.50 Brook 10 lks wide course W. } Wet bottom land, but

28.50 Poplar 16 Inchs diam. } To pieces with huts.

40.00 Set Quarter Sec. Post from which a Gum 12 Inchs diam bears S 80 E 6 lks. W. Oak 18 Inchs diam. bears N 60 W 14 lks -

58.00 S. Side of a Pond } Wet bottom land

64.00 N. Side ditto - 3.00 lks wide } Timber Beech, Elm.

69.50 Main branch of White river course S. W.

80.00 Set Post corner to Sect: 1112 from which a Beech 14 Inchs diam. bears N 13 E 17 lks. ditto 12 Inchs diam. bears S 30 W 15 lks -

North 6th Mile Town 4 N. R. 687 E.

10.00 Brook 3 lks wide course E. } Level rich Beech &

32.00 W. Oak 36 Inchs diam. } Poplar land -

40.00 Set Quarter Sec. Post from which a Beech 20 Inchs diam. bears S 75 E 14 lks. ditto 18 Inchs diam. bears S 74 W 15 lks -

43.00 Brook 3 lks wide course E.

44.40 Poplar 30 Inchs diam.

54.75 Same

80.00 Set a post for the corner of Town. 485 in Range 687 from which a Beech 16 Inchs diam. bears S 18 W 45 lks -

to Beech 14 Inchs diam. bears N 18 E 48 lks -

North 5th Mile Town 3 N. R. 6 87 E

34.00 Elm 18 Inches diam. } Maple Swamp the whole way

40.00 Set Post from which a Maple 12 Inches diam. bears N 70 W 12 lks. to Maple 6 Inches diam. bears S 81 E 30 lks.

53.40 Maple 12 Inches diam. } Maple Swamp.

80.00 Set Post corner to Sect: 1712 Town 3 N. R. 6 E from which a White 36 Inches diam. bears S 10 E 4 lks.
to Gum 12 Inches diam. bears N 10 W 4 lks.North 6th Mile Town 3 N. R. 6 87 E

16.00 To a large branch of White River the wide running N. W. } Maple Swamp

40.00 Set Quarter Sec. Post from which an Elm 12 Inches diam. bears N 76 W 12 lks. - W. Oak 12 Inches diam. bears N 84 E 20 lks.

50.00 quit the Swamp

59.00 Brook 3 lks wide course N. } A beautiful flat of Beech

60.00 W. Oak 16 Inches diam. } Sugar tree land

80.00 Set a Post for the corner of Town: 314 in Range N 6 87 from which a Beech 8 Inches diam. bears N 42 W 11 lks.
to Beech 12 Inches diam. bears S 3 W 59 lks.North Between Townships 474 in Ranges 6 87
C. Boundary of F. H. A. R. 6 E.

10.00 Brook 15 lks wide course N. } Good rock land

13.00 Gum 30 Inches diam. } Timber Sugar P.

40.00 Set Quarter Sec. Post from which a Beech 20 Inches diam. bears N 57 W 25 lks. W. Oak 6 Inches diam. bears S 40 E 14 lks.

62.00 Brook 3 lks wide course S. E. } low flat land: rich

76.00 W. Oak 40 Inches diam. } Timber Beech, Elm P.

80.00 Set post corner to Sect: 25136 T. 4 N. R. 6 E from which a Gum 24 Inches diam. bears N 70 E 26 lks.
to Beech 24 Inches diam. bears S 73 W 32 lks.North 2nd Mile Town 4 N. R. 6 87 E

20.00 Brook 3 lks wide course S. W. } Level rich land. Timber.

37.25 W. Oak 12 Inches diam. } Beech, Ash, Oak P.

40.00 Set Quarter Sec. Post from which a Gum 24 Inches diam. bears S 82 W 25 lks. Beech 18 Inches diam. bears N 49 E 37 lks.

51.00 Brook 4 lks wide course N. } Level rich land. Timber

79.20 Poplar 45 Inches diam. } Beech, Poplar, Ash P.

80.00 Gum 36 Inches diam. corner to Sect: 24725 T. 4 N. R. 6 E from which a Hickory 15 Inches diam. bears S 45 E 20 lks.
to Beech 16 Inches diam. bears N 15 E 48 lks.North 3rd Mile Town 4 N. R. 6 87 E

15.00 Brook 3 lks wide course N. } Level; Beech land

28.00 Beech 14 Inches diam. }

40.00 Set Quarter Sec. Post from which a Beech 12 Inches diam. bears N 72 W 17 lks. ditto 12 Inches diam. bears S 80 E 27 lks.

45.00 Brook 3 lks wide course N. } Port Beech P.

60.00 W. Oak 36 Inches diam.

61.00 extend Swamp } Part Swamp land

80.00 Set Post in Swamp corner to 13724 from which a Gum 8 Inches diam. bears S 64 E 19 lks. Maple 10 Inches diam. bears S 66 W 13 lks.

North 1st Mile Town 4 N. R. 6 87 E

39.00 Poplar 36 Inches diam. } Maple Swamp

40.00 Set Quarter Sec. Post from which a Beech 12 Inches diam. bears N 72 W 17 lks. Elm 14 Inches diam. bears S 63 E 11 lks.

72.00 Beech 100 lks running N. W. } This line passes over pretty good bottom. but to pieces with huts.

80.00 Set Post corner to Sect: 12712 from which a Beech 12 Inches diam. bears N 78 W 23 lks. - Augt 22nd 1886.North 5th Mile Town 4 N. R. 6 87 E

11.50 Brook 10 lks wide course N. } Wet bottom land, hut

28.00 Poplar 16 Inches diam. } To pieces with huts.

40.00 Set Quarter Sec. Post from which a Gum 12 Inches diam. bears S 80 E 6 lks. W. Oak 18 Inches diam. bears N 60 W 14 lks.

58.00 S. Side of a Pond } Wet bottom land

64.00 N. Side ditto - 3.00 lks wide } Timber Beech, Elm.

69.50 Main branch of White river course S. W.

80.00 Set Post corner to Sect: 1712 from which a Beech 14 Inches diam. bears N 63 E 17 lks. ditto 12 Inches diam. bears S 30 W 15 lks.

North 6th Mile Town 4 N. R. 6 87 E

10.00 Brook 3 lks wide course E. } Level rich Beech P.

32.00 W. Oak 36 Inches diam. } Poplar land

40.00 Set Quarter Sec. Post from which a Beech 20 Inches diam. bears S 75 E 14 lks. ditto 18 Inches diam. bears S 74 W 15 lks.

47.00 Brook 3 lks wide course E.

44.40 Poplar 30 Inches diam.

54.75 Same

80.00 Set a post for the corner of Town: 475 in Range 6 87 from which a Beech 16 Inches diam. bears S 18 W 15 lks.

to Beech 14 Inches diam. bears N 13 E 24 lks.

Township N^o 3, North Range N^o 1 East of the Meridian Continued.

North Sections 4 & 5.

5.19 Elm 30.

22.00 Muskratuck 2:00 W.

30.00 Same S^o 40 E — West 2:00 — N 17:50 — Then East 2:00 to the true line
S^o 3:00 to the creek.

79.50 Intersected S^o 100 W — Beech N 24 W 6 — Oak 20 S^o 35 E 23 — Part Bottom
Beech, Oak, Hickory & Poplar.

Thursday November 6th 1806 — Completed this Township.

Surveyed by

Sacot Fowler

Deputy Surveyor.

Township N^o 4, North Range N^o 1 East of the Meridian.

North Sections 35 & 36.

10.50 Beech 14.

40.00 $\frac{1}{2}$ Mile Post — Beech 14 N 21 E 24 — Elm 13 S 30 W 4 links.

52.00 Branch 4 W.

52.12 Branch 6 W.

64.00 Branch 6 W.

80.00 Mile Post — Beech 20 S^o 68 W 28 — Beech 18 N 2 W 17 links — Level —
Beech, Poplar, Gum, Oak, Ash & Hickory.

East. Sections 23 & 36 Random.

40.00 Same Post.

70.65 Branch 8 S.

77.06 Intersected 73 S.

West. True line Blazed.

39.50 $\frac{1}{2}$ Mile Post — Beech 23 S^o 88 W 27 — Poplar 10 S^o 20 W 11 links — Level —
Beech, Poplar, Gum & Oak.

North Sections 34 & 35.

20.00 Pond 2:50 West.

40.00 $\frac{1}{2}$ Mile Post — Beech 26 N 32 W 20 — Beech 21 N 36 E 14 links.

48.04 Poplar 22.

65.50 Pond 2:00 West.

80.00 Mile Post — Gum 21 S^o 18 E 27 — Beech 12 S^o 78:30 W 49 links — Level —
Beech, Oak, Gum & Poplar.

East. Sections 26 & 35 Random.

40.00 Same Post.

80.00 9th of the Post.

West. True line Blazed.

Township. R. 4 North Range N. 6 East of the Meridian continued.

40.00 1/2 mile post - Beech 12 S. 6 W. 11 - Beech 10 S. 7 W. 26 links Level - post
West - Beech, Oak, Gum, Maple, Elm, & Poplar.

North sections 25 & 26.

25.50 Oak 32.

40.00 1/2 mile post - Beech 30 S. 16 E. 12 - Beech 7 N. 26 W. 4 links.

41.00 Branch 4 W.

63.82 Beech 24.

80.00 Wide post - Beech 12 N. 50 E. 33 - Beech 8 West 20 links - Level -
Beech, Poplar, Gum, Hickory & Oak.

North sections 32 & 33.

1.00 Muddy fork 200 & 300 W.

18.12 Beech 22.

40.00 1/2 mile post - Beech 20 N. 62 W. 21 - Beech 16 S. 68 E. 36.

22.62 Beech 20.

80.00 Wide post - Honey Locust 13 N. 12 E. 10 - Gum 16 S. 81 W. 20 - Bottoms
West - Beech, Oak, Hickory, Walnut & Ash.

East sections 27 & 31 Random.

1.00 Branch 15 S. 32 W.

29.50 Swamp 50 S.

40.00 Swamp post.

26.50 Muddy fork 2:00 S. 20 W.

West. True line Blazed.

40.20 1/2 mile post - Beech 10 S. 27 W. 7 - Beech 18 S. 26 W. 25 links - All Bottoms
Beech, Oak, Maple, Elm & Hickory.

North sections 26 & 27.

8.00 Muddy fork 2:00 wide & up it leaving on the E at 25:00 course S. 40 West

40.00 1/2 mile post - Beech 12 East 14 - Gum 12 S. 61 W. 30 W. 24 links.

Township. R. 4 North Range N. 6 East of the Meridian continued.

61.51 Beech 16.

64.00 Branch 20 S. 40 W.

80.00 Wide post - Beech 12 N. 12 E. 14 - Beech 23 S. 24 E. 32 - Level - Beech, Oak -
Poplar & Gum.

Friday Nov. 7th 1806.

North sections 32 & 33.

1.25 Swamp 3 W.

40.00 1/2 mile post - Beech 12 S. 12 W. 16 - Elm 8 S. 52 E. 24 links.

59.00 Branch 10 W.

80.00 Wide post - Beech 32 N. 13 E. 8 - Beech 12 S. 5 E. 17 links - Level - Beech
Oak, Elm, Maple & Poplar.

East sections 28 & 33 Random.

40.00 Swamp post.

62.00 Branch 10 N. 30 E.

77.00 Hit the post.

West True line Blazed.

39.50 1/2 mile post - Beech 12 N. 56 W. 20 - Beech 13 S. 41 E. 35 links - Level - Beech
Poplar, Oak & Oak.

North sections 27 & 28.

40.00 1/2 mile post 1/2 Oak 6 S. 19 E. 8 - 1/2 Oak 2 S. 77 E. 17 links.

50.00 Maple 30.

80.00 Wide post - Beech 10 N. 68 E. 17 - Beech 10 S. 47 W. 14 links - Low wet Bottoms -
& Branch - Oak, Beech, Gum & Oak & Maple.

North sections 31 & 32.

4.21 W. Oak 24.

10.00 North side of Bottoms.

40.00 1/2 mile post - Beech 12 S. 46 W. 14 - Beech 10 S. 43 W. 10.

Township N^o 4 North Range N^o 6 East of the Meridian Continued

49.20 Branch 24.
 51.75 Beech 22.
 80.00 Wide post - Beech 22 N 24 E 15 - Beech 16 S 17 E 30 links - Level - Beech
 Poplar, Ash & Oak - Good plow land.

East. Sections 29 & 32 Handson.

3.50 Branch 6 S 70 W.

35.50 Branch 6 S 70 W.

40.00 Same post.

80.00 Hit the post.

West. True line played.

40.00 $\frac{1}{2}$ Mile post - Ash 12 N 51 E 15 - Ash 14 S 32 E 16 links - Level - Beech
 Poplar, Ash & Oak & Hickory.

North. Sections 28 & 29.

7.25 Beech 18.

50.00 $\frac{1}{2}$ Mile post - Gum 18 S 31 W 26 - W. Oak 33 N 12 E 13 links.

60.88 W. Oak 36.

80.00 Wide post - Gum 22 S 15 E 17 - Beech 24 S 42 W 38 links - Beech, Oak
 & Poplar.

Saturday November 5th 1866.

West. Sections 30 & 31.

37.50 Creek 2:00 North.

40.00 $\frac{1}{2}$ Mile post - Beech 6 S 16 W 10 - Y. Sycamore 8 S 5 E 10 links.

69.00 W. Oak 36.

76.16 Intersected N. 26 on 7 S 25 E 11 - W. Oak 24 S 31 E 33 links - Level
 post set - Beech, Gum, Ash, Maple, Poplar & Oak - The first 12:00
 upland - Good for the plow.

Township N^o 4 North Range N^o 6 East of the Meridian Continued.

North. Sections 29 & 30.

34.25 Beech 16.

40.00 $\frac{1}{2}$ Mile post - Beech 20 S 71 E 6 - Beech 12 S 26 W 14 links.

55.00 Wet Bottom to the post.

80.00 Wide post - Maple 10 S 80 E 10 - Birch 20 S 19 E 11 links - The upland
 Beech, Poplar & Oak - The Bottom Maple, Ash, Gum & Birch.

West. Sections 19 & 30.

33.00 Creek 2:00 S 60 E.

36.50 Same S 60 E.

40.00 $\frac{1}{2}$ Mile post - Hickory 20 N 16 E 20 - W. Beech 6 S 85 E 18.

42.00 Creek 2:00 S.

51.50 Same S 60 W.

67.30 Same S 60 W.

71.26 Intersected 62 S - Elmg S 33 E 19 - Maple 12 S 83 E 34 links - Bottom
 Beech, Elm, Gum & Maple & W. Oak.

East. Sections 20 & 27 Handson.

16.50 To the upland.

40.00 Same post.

51.00 Branch 10 S 80 W.

66.00 Branch 2 S 60 W.

79.62 Intersected 30 S.

West. True line played.

39.81 $\frac{1}{2}$ Mile post - Beech 22 N 22 E 5 - Ash 14 S 40 E 24 links - Beech, Oak
 & Ash & Poplar in the upland - & Maple, Elm & Gum in the Bottom.

East. Sections 21 & 28 Handson.

40.00 Same post.

Township N^o 4. North Range. R^o 6 East of the Meridian Continued

79.60 Intersected 30 N.

West. True line Blazed.

40.00 $\frac{1}{2}$ Mile post - Beech 20. S^o 5 E 36 - Poplar 20. S^o 22 E 17 links - Level - Beech, Oak, Poplar, Gum & Ash.

East. Sections 22 & 27 Random.

16.00 Branch 20. S.

40.00 True post.

30.00 Hit the post.

40.00 $\frac{1}{2}$ Mile post - W. Oak 22. S^o 15 E 10 - W. Oak 23. S^o E 12 links - Level - Beech, Oak, Poplar & Ash.

East. Sections 23 & 26 Random.

11.00 Branch 20. S. 30 E.

12.50 Muscackituck 2:00 S. 10 W.

40.00 True post.

30.50 Intersected 20 S.

West. True line Blazed.

40.25 $\frac{1}{2}$ Mile post - Maple 10. S^o 60 E 7 - Gum 14. S^o 55 W 5 links - Level - Beech, Gum, Maple, Poplar & Oak.

East. Sections 24 & 25 Random.

20.50 Branch 16. S. 40 W.

40.00 True post.

19.12 Branch 12. S. 25 W.

77.50 Intersected 20 S.

West. True line Blazed.

39.75 $\frac{1}{2}$ Mile post - Beech 24. S^o 73 E 10 - Beech 25. S^o 21 W 40 links - Level - Beech, Gum, Poplar & Oak. { November 7th 1806 }

Township N^o 4. North Range. R^o 6 East of the Meridian Continued.

North Sections 23 & 24.

40.00 $\frac{1}{2}$ Mile post - Gum 12. S^o 4 E 21 - Beech 12. S^o 42 W 26 links.

60.00 Muscackituck 2:00 S. 70 W.

30.00 $\frac{1}{2}$ Mile post - Elm 12. S^o 62 E 10 - Sycamore 5 feet N^o 52 W 15 links - Level - Bottom - Beech, Oak, Gum, Ash, Elm & Walnut.

North Sections 22 & 23.

18.75 Poplar 20.

40.00 $\frac{1}{2}$ Mile post - Beech 20. S^o 62 W 15 - Gum 20. S^o 10 W 25 links.

37.00 W. Oak 30.

65.00 Branch 10. S. 30 E.

20.00 $\frac{1}{2}$ Mile post - Gum 24. S^o 30 E 4 - Maple 14. S^o 84 W 36 links - Level - Beech, Maple, Oak & Ash.

North Sections 21 & 22.

26.20 Beech 16.

40.00 $\frac{1}{2}$ Mile post - Beech 22. S^o 32 E 5 - Beech 12. S^o 34 W 37 links.

43.00 Branch 6 E.

31.65 W. Oak 33.

80.00 $\frac{1}{2}$ Mile post - Beech 12. S^o 16 W 16 - Beech 16. S^o 72 E 17 links - Level - Beech, Oak, Poplar & Ash.

North Sections 20 & 21.

9.25 Branch 12. 10.

19.00 Gum 24.

40.00 $\frac{1}{2}$ Mile post - Beech 8. S^o 79 W 14 - Beech 20. S^o 66 E 7.

69.25 Beech 24.

80.00 $\frac{1}{2}$ Mile post - Beech 12. S^o 36 W 36 - Oak 12. S^o 15 W 25 links - Level - Beech, Oak, Poplar & Ash.

Township N^o 4. North Range. N^o 6 East. of the Meridian continued.

79.60 Intersected 30 N.

West. True line Blazed.

40.00 $\frac{1}{2}$ Mile post - Beech 20. S 3 E 36 - Poplar 20. S 22 E 17 links - Level - Beech.

Oaks, Poplar, Gum & Ash.

East. Sections 22 & 27 Random.

15.00 Branch 20 S.

40.00 Gen. post.

30.00 1st the post.

40.00 $\frac{1}{2}$ Mile post - W. Oak 22. S 15 E 10 - W. Oak 23. S - E 12 links - Level -

Beech, Oak, Poplar & Ash.

East. Sections 23 & 26 Random.

11.00 Branch 20. S 30 E.

12.50 Muscackituck 2:00. S 10 W.

40.00 Gen. post.

30.00 Intersected 20 S.

West. True line Blazed.

40.25 $\frac{1}{2}$ Mile post - Maple 10. S 60 E 7 - Gum 14. S 55 W 5 links - Level -

Beech, Gum, Maple, Poplar & Oak.

East. Sections 24 & 25 Random.

20.50 Branch 6. S 60 W.

40.00 Gen. post.

69.12 Branch 12 N 25 W.

79.42 Intersected 20 S.

West. True line Blazed.

39.74 $\frac{1}{2}$ Mile post - Beech 24. S 73 E 10 - Beech 25. S 21 W 40 links - Level -

Beech, Gum, Poplar & Oak.

{ November 7th 1806 }

Township N^o 4. North Range. N^o 6 East of the Meridian continued.

North Sections 23 & 24.

40.00 $\frac{1}{2}$ Mile post - Gum 12. S 4 E 21 - Beech 12. S 42 W 26 links.

60.00 Muscackituck 2:00. S 70 W.

20.00 Mile post - Elm 12. S 62 E 10 - Sycamore 4 feet N 52 W 15 links - Level -

Bottom - Beech, Oak, Gum, Ash, Elm & Walnut.

North Sections 22 & 23.

18.75 Poplar 20.

40.00 $\frac{1}{2}$ Mile post - Beech 20. S 62 W 15 - Gum 20. S 10 W 25 links.

37.00 W. Oak 30.

65.00 Branch 10 N 30 E.

80.00 Mile post - Gum 24. S 30 E 4 - Maple 14. S 84 W 36 links - Level -

Beech, Maple, Oak & Ash.

North Sections 21 & 22.

26.20 Beech 16.

40.00 $\frac{1}{2}$ Mile post - Beech 22. S 32 E 5 - Beech 12. S 34 W 37 links.

43.00 Branch 6 E.

31.65 W. Oak 33.

80.00 Mile post - Beech 12. S 16 W 16 - Beech 16. S 74 E 17 links - Level - Beech,

Oaks, Poplar & Ash.

North Sections 20 & 21.

9.25 Branch 12 10.

19.00 Gum 24.

40.00 $\frac{1}{2}$ Mile post - Beech 8. S 79 W 14 - Beech 20. S 66 E 7.

69.25 Beech 24.

80.00 Mile post - Beech 12. S 36 W 36 - Oak 12. S 15 W 25 links - Level -

Beech, Oak, Poplar & Ash.

Township No. 4 North Range No. 6 East of the Meridian Continued

North Sections 19 & 20.

57.28 Elm 30.

40.00 $\frac{1}{2}$ mile post - Maple 16. S. 27 E 26 - Maple 6 N 46 E 9 links.

70.50 Creek 2:00 West.

78.75 Same S. 50 E.

80.00 Mile post on the East Bank of the Creek - Lycamore 36 N 27 E 17 -
Lycamore 33 S 75 E 34 - Wet Bottom - Maple, Elm & Gum.

West. Sections 18 & 19.

27.00 Branch 10 South.

40.00 $\frac{1}{2}$ mile post - Beech 22. S. 31 W 19 - Beech 16. S. 1 E 24 links.

51.12 Beech 20.

73.00 Intersected 98 N - Beech 18. S. 37 E 38 - Beech 22 N 72 E 44 - a little
rising - Beech, Poplar & Oak.

East. Sections 17 & 20 Random.

35.00 Pond 75 N.

40.00 Tem. post.

79.40 Intersected 20 N.

West. True line Blazed.

39.70 $\frac{1}{2}$ mile post - Beech 23. S. 36 W. 28 - Sugar tree 10 N 81 E 23 links - Beech,
Oak, Maple, & Poplar.

East. Sections 16 & 21 Random.

18.30 Branch 10 N.

40.00 Tem. post.

30.00 This the post.

West. True line Blazed.

40.00 $\frac{1}{2}$ mile post - Beech 16 N 21 E 5 - Beech 12 N 22 W 23 links - Level -

Township No. 4 North Range No. 6 East of the Meridian Continued

Beech, Oak, Poplar, Ash & Gum.

November 10th 1806.

East. Sections 15 & 22 Random.

4.50 Branch 6 S.

40.00 Tem. post.

79.76 Intersected 30 S.

West. True line Blazed.

39.83 $\frac{1}{2}$ mile post - Beech 9 N 76 W 13 - Beech 7 N 31 E 6 links - Level - Beech,
Poplar, Gum, Ash, & Oak - post 100.

East. Sections 14 & 23 Random.

2.50 Branch 6 S.

6.50 Branch 6 S.

40.00 Tem. post.

72.00 Byo. N.

30.50 This the post.

West. True line Blazed.

40.25 $\frac{1}{2}$ mile post - Beech 14 N 61 W 18 - Beech 20 N 40 E 34 links - Level -
Beech, Poplar, Oak, & Gum.

East. Sections 13 & 24 Random.

6.50 Creek 2:00 S. 50 W.

13.00 Same S. 60 W.

36.30 Same S. 80 W.

40.00 Tem. post.

80.50 Intersected 60 S.

West. True line Blazed.

40.25 $\frac{1}{2}$ mile post - Beech 12 S 29 W 42 - Water Beech 7 N 22 E 7 links - Level
Bottom - part, West & Brushy - Beech, Gum, Poplar & Oak.

Township, S. 4. North Range, T. 6 East of the Meridian Continued

North	Sections 13 & 14.
17.50	Sycamore 4 feet.
22.00	33.00 Through old swamp pond .
40.00	1/2 mile post in pond Maple 12 S. 63 E. 43. Maple 12 N. 73 E. 42.
76.50	Beech 16.
80.00	1/2 mile post - Beech 27 N. 46 E. 25 - Beech 8 S. 57 W. 5 links - Level - Beech, Oak, Gum, & Poplar - Beech in the pond.
North	Sections 14 & 15.
12.00	Elm 24.
40.00	1/2 mile post - Beech 14 S. 24 E. 8 - W. Oak 10 N. 29 E. 22 links.
33.62	W. Oak 22.
80.00	1/2 mile post - Beech 7 S. 40 W. 6 - Beech 10 N. 52 E. 2 links - Level - Beech, Oak, Maple, Gum, & Poplar.
North	Sections 15 & 16.
28.20	Beech 12.
40.00	1/2 mile post - Beech 7 S. 60 E. 7 - Beech 23 N. 53 W. 13 links.
50.25	Branch 6 W.
33.00	Beech 30.
64.75	Branch 15 W.
80.00	1/2 mile post - Beech 12 N. 54 E. 9 - Beech 14 S. 72 W. 25 links - Low Bridges - Good farmland - Beech, Poplar, Ash & Oak.
North	Sections 16 & 17.
9.62	Branch 12 West.
17.00	Wet Bottom.
40.00	1/2 mile post - Beech 10 S. 12 E. 14 - Beech 6 N. 67 W. 13 links.
46.00	Swamp to the post - The first 17.00 upland - Then, Wet Bottom. Beech, Maple & Elm.

Township, S. 4. North Range, T. 6 East of the Meridian Continued

North	Sections 17 & 18.
10.50	Creek 2:00 West.
40.00	1/2 mile post - Elm 6 S. 39 E. 15 Elm 8 S. 38 W. 13 links.
37.25	W. Oak 22.
80.00	1/2 mile post - Sugar tree 16 S. 77 E. 11 - Beech 20 N. 72 W. 13 links - Bottom - Beech, Oak, Maple, Elm & Gum.
November 11 th 1806 Tuesday.	
West.	Sections 17 & 18.
30.00	Beech 18.
40.00	1/2 mile post - Beech 22 S. 30 E. 32 - Beech 18 S. 23 W. 31 links.
71.50	Intersected 164 N. - Poplar 30 N. 38 E. 19 - Beech 16 S. 2 W. 17 - Beech, Poplar, Hickory, Oak & Maple.
East.	Sections 8 & 17.
34.00	Creek 2:00 S. 60 W.
40.00	1/2 mile post - Beech 20 N. 20 E. 20 - Beech 14 S. 32 W. 25 links.
46.50	Pond 60 N.
69.00	Swamp.
80.00	1/2 mile post - in the swamp - Wet Bottom - Beech, Maple, Elm, Gum & Ash.
West.	Sections 9 & 16.
20.00	Branch 10 S. 40 W.
27.00	Branch 6 N.
40.00	1/2 mile post - Beech 33 N. 11 W. 29 - Poplar 22 S. 23 E. 19 links.
63.00	To the Swamp which continues to the 1/2 mile post - Low Bridges to the swamp - Beech, Oak, Hickory, Ash & Poplar.
East.	Sections 10 & 15 Handson.
23.38	Branch 6 S. 50 W.

Township N^o 4 North Range N^o 6 East of the Meridian Continued

20.00 Turn post.
 46.33 Branch 12 South.
 31.00 Hit the post.
 West. True line blazed.
 40.30 $\frac{1}{2}$ Mile post - Beech 20 N 26 W 16 - Beech 8 S 20 E 7 links. A little rising - Beech, Poplar, Ash & Oak.
 East. Sections 11 & 12 Random.
 37.25 Branch 10 S^e Run.
 43.00 Turn post.
 57.00 Drive S^e 50 W.
 77.00 Hit the post.
 West. True line blazed.
 39.50 $\frac{1}{2}$ Mile post - Beech 16 S 44 E 19 - Beech 12 S 38 W 21 links - Level - Beech, Oak, Poplar & Oak.

Wednesday November 12th 1806.

East. Sections 12 & 13 Random.
 32.00 Branch 13 S.
 40.00 Turn post.
 40.50 Creek 2:00 S.
 36.50 Branch 50 S.
 63.00 Same N 50 W.
 70.00 Same S 30 W.
 74.00 Same North.
 80.00 Intersected 50 N.
 West. True line blazed.
 40.00 $\frac{1}{2}$ Mile post - Boxelder 8 N 61 W 22 - Maple 18 N 32 W 36 links. Beech, Oak & Maple - flat bottom.

Township N^o 4 North Range N^o 6 East of the Meridian Continued.

North Sections 11 & 12.
 8.50 Beech 20.
 40.00 $\frac{1}{2}$ Mile post - Beech 10 S 22 W 15 - Beech 12 S 43 E 24 links.
 41.38 Gum 33.
 80.00 Mile post - Beech 7 S 22 E 15 - Maple 16 N 77 W 16 links - Level flat wet - Beech, Gum, Maple, Hickory & Oak.

Thursday November 13th 1806.

North Sections 10 & 11.
 8.75 Branch 10 W.
 12.50 Beech 22.
 40.00 $\frac{1}{2}$ Mile post - Gum 15 N 9 W 18 - Beech 14 S 40 E 35 links.
 43.50 Gum 33.
 46.75 Branch 20 W.
 80.00 Mile post - Beech 14 N 53 E 12 - Beech 14 S 49 W 48 links - Level - Beech, Oak & Poplar.

North Sections 9 & 10.
 29.88 Poplar 50.
 37.00 6:50 Through wet bottom.
 40.00 $\frac{1}{2}$ Mile post - Maple 6 S 82:30 E 15 - Maple 7 S 50:30 W 23 links.
 67.38 Beech 32.
 80.00 Mile post - Beech 20 S 25 E 6 - Beech 32 S 85 W 22 links - Low bridges good land. - Beech, Poplar & Oak - Maple in the bottom.

North Sections 8 & 9.
 2:00 in pond.
 40.00 $\frac{1}{2}$ Mile post - Oak 14 N 83 E 12 - Maple 12 N 41 W 29 links.
 49.29 W. Oak 18.
 80.00 Mile post - Maple 14 N 57 W 12 - Elm 22 S 40 E 27 links - Level wet bottom.

Township N^o 4 North Range N^o 6 East of the Meridian continued.

Maple, Elm & Gum & Ash.

North Sections 7 & 8

25:00 Wet Bottom.

40.00 $\frac{1}{2}$ Mile Post - Beech 10 S^o 62 E 15 - Beech 12 S^o 78 W 22 links.

15.00 Beech 12.

30.00 Mile Post - Beech 10 S^o 66 E 2 - Beech 12 S^o 28 W 20 - Low Ridge.

Good Yellow Land - Beech, Poplar, Oak & Ash.

West. Sections 6 & 7.

17.12 Poplar 22.

40.00 $\frac{1}{2}$ Mile Post - Beech 21 N^o 6 W 30 - Beech 2 N^o 59 W 31.

71.68 Intersected 205 S^o - Beech 14 N^o 39 E 17 - Beech 10 N^o 33 E 32 - Beech, Poplar, Oak & Ash.

Friday November 14th 1806.

North Sections 5 & 6.

12.50 Branch 10 N^o 30 E.

13.25 Ash 16.

40.00 $\frac{1}{2}$ Mile Post - Sugar tree 12 N^o 29 W 6 - Beech 3 S^o 37 E 21 links.

41.25 Branch 10 E.

26.25 Beech 30.

73.33 Intersected 21:33 W - Beech 10 N^o 28 W 9 - Beech 10 S^o 14 E 23 links - Low Ridge - Beech, Poplar, Ash & Oak.

East. Sections 5 & 8 Random.

16.75 Branch 12 S^o.

Bottom to the Post.

31.50 Branch 200 S^o 40 W.

40.00 Tem. Post.

30.12 Hit the Post.

Township N^o 4 North Range N^o 6 East of the Meridian continued.

West. True line blazed.

40.00 $\frac{1}{2}$ Mile Post - Beech 12 N^o 58 E 15 - Beech 22 S^o 44 E 16 links - Beech, Maple, Gum, Elm & Oak.

Friday November 12th 1806.

East. Sections 4 & 9 Random.

39.75 Branch 15.

40.00 Tem. Post.

30.00 Hit the Post.

West. True line blazed.

40.00 $\frac{1}{2}$ Mile Post - Maple 24 S^o 23 E 32 - Maple 16 S^o 29 E 19 links - Level - Beech, Poplar, Ash & Oak - The first 50:00 Wet Bottom - Maple, Gum, Elm & Oak.

East. Sections 3 & 10 Random.

40.00 Tem. Post.

30.30 Intersected 60 S^o.

West. True line blazed.

40.15 $\frac{1}{2}$ Mile Post - Beech 12 S^o 39 E 11 - Beech 10 N^o 73 W 25 links - Beech, Poplar & Oak, Gum & Ash.

East. Sections 2 & 11 Random.

10.00 Branch 10 S^o 30 W.

40.00 Tem. Post.

43.00 Branch 2 S^o 40 W.

30.00 Hit the Post.

West. True line blazed.

40.00 $\frac{1}{2}$ Mile Post - Elm 10 N^o 80 W 7 - Beech 30 S^o 38 E 20 links - The first upland Beech, Poplar & Oak.

East. Sections 1 & 12 Random.

Township. N^o 4 North Range N^o 6 East of the Meridian Continued

40.00 Tan. post.

20.50 Intersected 40.50

West. True line cleared.

40.25 $\frac{1}{2}$ mile post - W. Oak 16. S^o 47 W 20 - Beech 12. S^o 21 E 22 links - Level -
Hart wet - Beech, Maple, Gum, Ash, Elm, Poplar & Oak.

North Sections 1 & 2.

28.88 W. Oak 22.

40.00 $\frac{1}{2}$ mile post - Beech 13. N 36 W 31 - Beech 9. S 12 W 14 links.

47.38 W. Oak 36.

40.70 Intersected 92 W^o post - Poplar 24. S^o 66 E 17 - Beech 27. S^o 44 W 22.
Level post wet - Beech, Poplar, Gum & Oak.

North Sections 2 & 3.

16.28 W. Oak 22.

40.00 $\frac{1}{2}$ mile post - Poplar 24. N 44 E 6 - Poplar 16. S^o 29 W 12 links.

66.28 Branch 6 W.

90.0 Intersected 117.5 W - Elm 13. S^o 7 E 32 - Birch 16. S^o 26 W 33 - Low Ridge -
Beech, Poplar & Oak - The last 10:00 Wet Bottom.

North Sections 3 & 4

30.00 20:00 Wet Bottom

40.00 $\frac{1}{2}$ mile post - Maple 10. S 46 E 10 - Maple 6. N 46 W 13 links.

62.62 B. Walnut 22.

72.65 Intersected 3:9.5 W - Beech 18. N 32 E 13 - Beech 18. S^o 60 W 37 - Low Ridge -
Beech, Poplar & Oak.

North Sections 4 & 5.

15.75 Ash 18.

40.00 $\frac{1}{2}$ mile post - Maple 10. S^o 71 W 6 - Maple 10. S^o 27 E 19 links.

Township. N^o 4 North Range N^o 6 East of the Meridian Continued

67.00 Gum 30

76.88 Intersected 397 W - Beech 10. S 27 E 19 - Beech 10. N 72 W 15 - Bottom Wet -
Gum, Maple, Ash & Oak.

Saturday November 15th 1806.

Surveyed by

Saml. Fowler.

Deputy Surveyor.